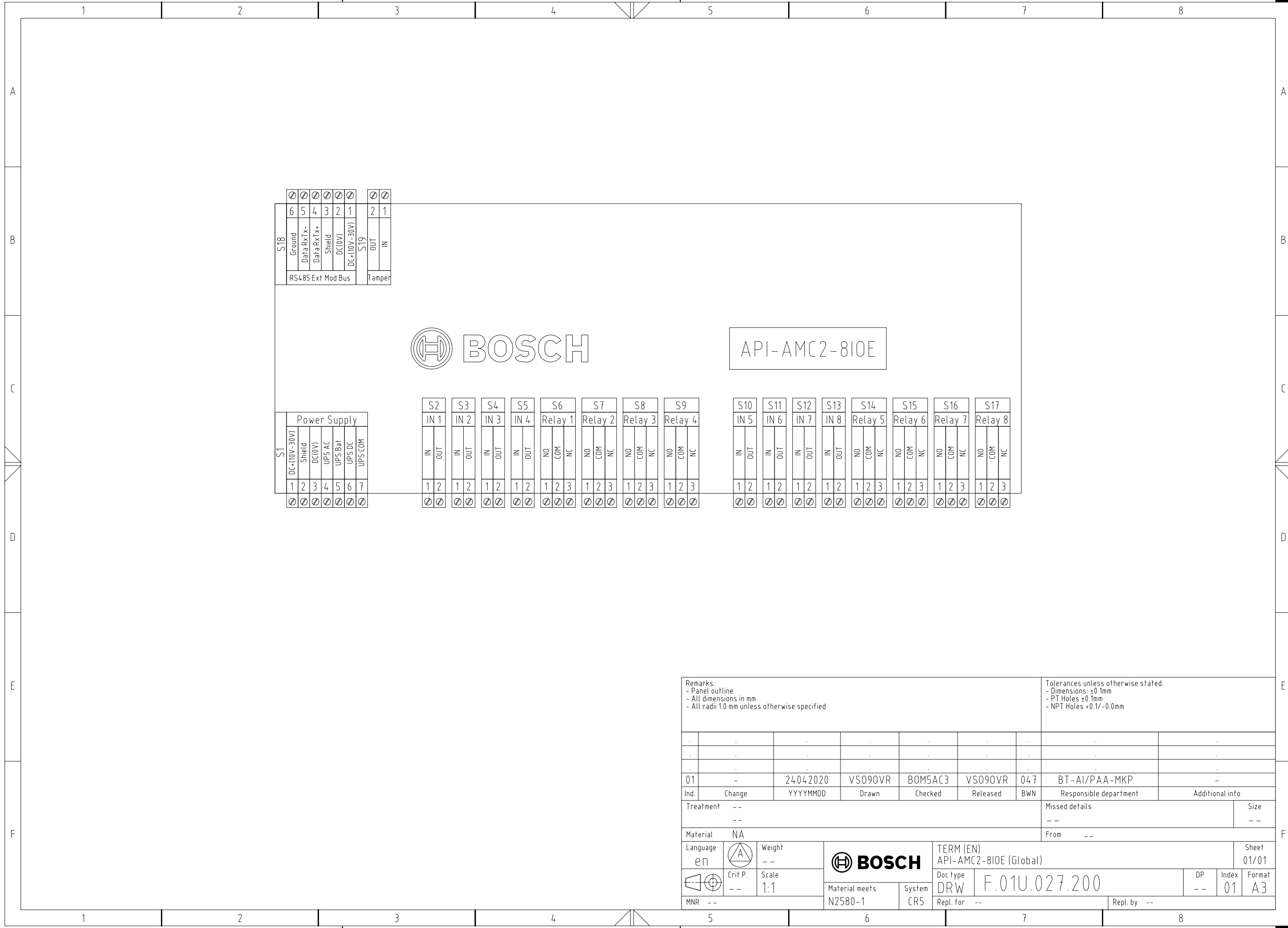


© Robert Bosch GmbH. All rights reserved. Also regarding any disposal, exploitation, reproduction, editing, distributing, as well as in the event of applications for industrial property rights.



S18	6	5	4	3	2	1	2	1
	Ground	Data RxTx-	Data RxTx+	Shield	DC(0V)	DC(10V-30V)	OUT	IN
	RS485 Ext Mod Bus						Tamper	

S1	Power Supply						
	DC(10V-30V)	Shield	DC(0V)	UPS AC	UPS Bat	UPS DC	UPS COM
	1	2	3	4	5	6	7
	⌀	⌀	⌀	⌀	⌀	⌀	⌀

S2	S3	S4	S5	S6	S7	S8	S9	S10	S11	S12	S13	S14	S15	S16	S17
IN 1	IN 2	IN 3	IN 4	Relay 1	Relay 2	Relay 3	Relay 4	IN 5	IN 6	IN 7	IN 8	Relay 5	Relay 6	Relay 7	Relay 8
IN	IN	IN	IN	NO	NO	NO	NO	IN	IN	IN	IN	NO	NO	NO	NO
OUT	OUT	OUT	OUT	COM	COM	COM	COM	OUT	OUT	OUT	OUT	COM	COM	COM	COM
NC	NC	NC	NC	NC	NC	NC	NC	NC	NC	NC	NC	NC	NC	NC	NC
1	1	1	1	1	1	1	1	1	1	1	1	1	1	1	1
2	2	2	2	2	2	2	2	2	2	2	2	2	2	2	2
3				3	3	3	3	3	3	3	3	3	3	3	3
⌀	⌀	⌀	⌀	⌀	⌀	⌀	⌀	⌀	⌀	⌀	⌀	⌀	⌀	⌀	⌀

Remarks: - Panel outline - All dimensions in mm - All radii 1.0 mm unless otherwise specified							Tolerances unless otherwise stated: - Dimensions: ±0.1mm - PT Holes ±0.1mm - NPT Holes +0.1/-0.0mm		
01	-	24.04.2020	VS090VR	BOM5AC3	VS090VR	047	BT-AI/PAA-MKP	-	
Ind.	Change	YYYYMMDD	Drawn	Checked	Released	BWN	Responsible department	Additional info	
Treatment	--						Missed details	Size	
	--						--	--	
Material	NA						From	--	
Language	eN	Crit P.	Scale	BOSCH		TERM (EN) API-AMC2-810E (Global)			Sheet 01/01
	⊕	--	1:1	Material meets	System	Doc.type	DP	Index	Format
MNR	--	N2580-1	CR5	DRW	F.01U.027.200	--	01	A3	
				Repl. for	--	Repl. by		--	