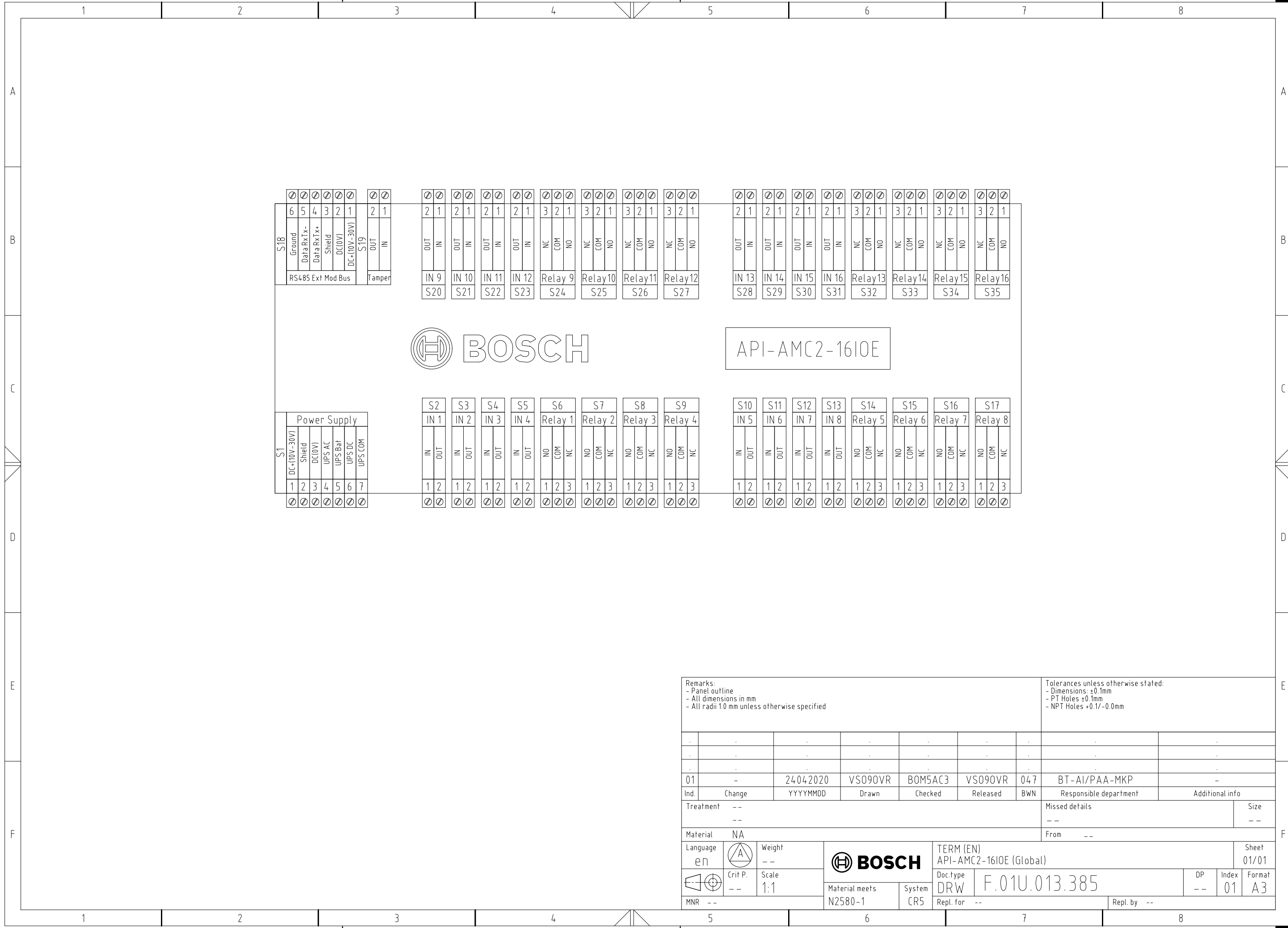


© Robert Bosch GmbH. All rights reserved. Also regarding any disposal, exploitation, reproduction, editing, distributing, as well as in the event of applications for industrial property rights.



Remarks: - Panel outline - All dimensions in mm - All radii 1.0 mm unless otherwise specified							Tolerances unless otherwise stated: - Dimensions: ±0.1mm - PT Holes ±0.1mm - NPT Holes +0.1/-0.0mm								
01	-	24.04.2020	VS090VR	B0M5AC3	VS090VR	04.7	BT-AI/PAA-MKP	-							
Ind.	Change	YYYYMMDD	Drawn	Checked	Released	BWN	Responsible department	Additional info							
Treatment	--	--	Missed details				Size	--							
Material	NA						From	--							
Language	eN	Weight	--	BOSCH TERM (EN) API-AMC2-1610E (Global)				Sheet	01/01						
Crit P. --	Scale	1:1	Material meets					N2580-1	System	CR5	Doc.type	DRW	F.01U.013.385	DP	--
MNR	--					Repl. for	--	Repl. by	--						